

➤ **PRODUCT DESCRIPTION**

- 1 to 5 color 4 zone universal DMX512 touch master panel, can also be used as 1 to 5 color 4 zone universal RF remote control.
- Each zone can be set as single color, dual color (WW / CW), RGB, RGBW or RGB + CCT light type.
- DMX signal output, compliant with standard DMX512 protocol, compatible with any supplier's DMX decoder.
- When used as an RF remote control, it is compatible with the DRC1224-5CV (Remote Control and Receiver).
- Ultra-sensitive high-strength glass touch panel with touch color wheel in the middle.
- Smooth and accurate colour adjustment by touching the colour wheel.
- Black and white glass panel available.
- Led indicator in the center of the device that indicates whether the device is on or off.
- The device retains the memory.

➔ For the complete and updated Device Manual, please consult the manufacturer's website www.dalcnet.com

➤ **TECHNICAL SPECIFICATIONS**

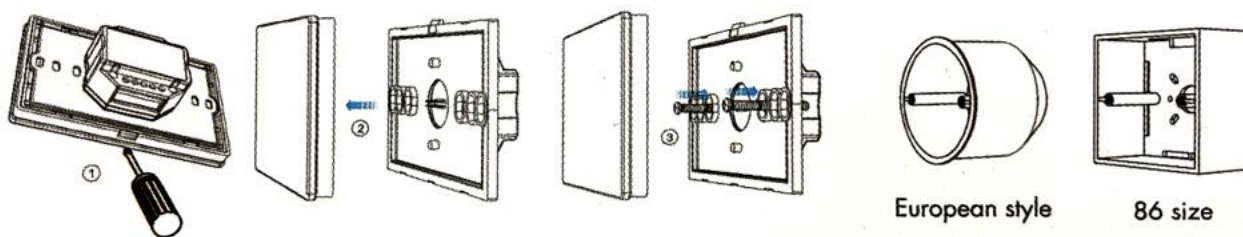
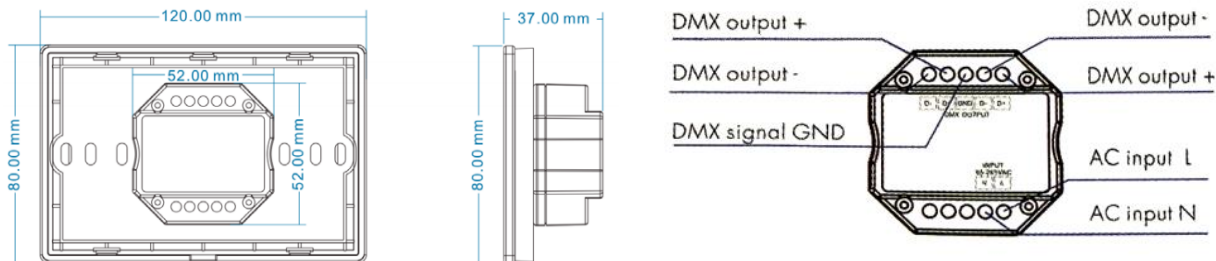
Input and Output	
Voltage in Input	100-240VAC
Current Input	Max 0.1 A
Output signal	DMX512, RF 2.4GHz

Warranty	
Warranty	5years

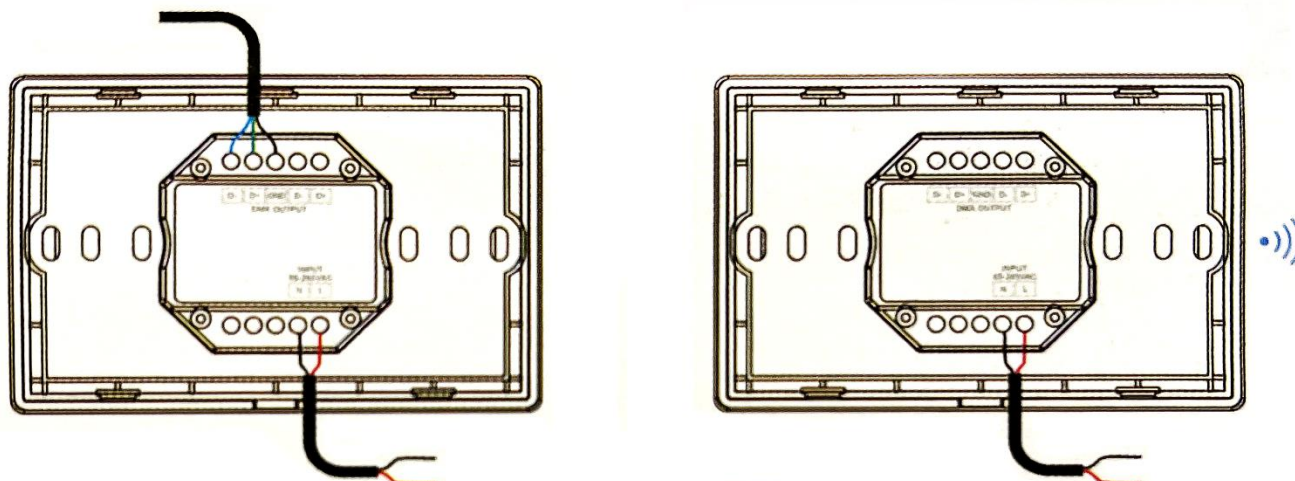
About Dimming	
Input signal	RF 2.4GHz + panel touch
RF Remote control	10m
Dimming level	256 levels
Dimming range	0-100%

Environment	
Operation Temperature	Ta: -30°C ÷ +55°C
Maximum temperature at tc	Tc: +65°C
IP rating	IP20

➤ **MECHANICAL STRUCTURE AND INSTALLATION**



➤ **WIRING DIAGRAM**




➤ KEY FUNCTIONS

Each zone can correspond to a single-color, dual-color (WW/CW), RGB, RGBW, or RGB+CCT(WW/CW) controller or lamp.

To enter the zone light setting:

1. Tap the power button to turn on the light,
2. Press the power button again to turn off the light.
3. Hold down the power button immediately for 5 seconds,
4. As soon as I enter the setting, press 1/2/3/4 Zone to set them.

For example, if you want to change the light type of zone 1 as an RGB type, press the Zone 1 button for 2 seconds for a long time, and then press  indicator for 2 seconds, doing so sets Zone 1 as RGB type.



Long press 2 second, set current zone as single color type.



Long press 2 second, set current zone as dual color type.



Long press 2 second, set current zone as RGB type.



Long press 2 second, set current zone as RGBW type.



Long press 2 second, set current zone as RGB+CCT type.

If you want to change zone 2/3/4, press the Desired Zone button for 2 seconds, then repeat the steps described above.

Short press on the ON/OFF button or on the color wheel or waiting for time-out 10 seconds, you will exit the area light type setting.



The short pressure turns on the zone light and selects the zone at the same time. Press 2s for a long time to turn off the zone light.

There are 4 separate or synchronous zone controls, each zone could control multiple receivers.

Only multiple zones with the same light type can be selected synchronously.



Turn the light on or off



One touch starts 10 dynamic models, a touch of 2 sec. starts a mode-cycle



RGB/Color Temperature

Press RGB or CCT to change from RGB to CCT



One tap to repeat scenes. Long press for 2 sec. saves the color in the scene. Recall the 4 scenes or save them in sync.



24-level RGB



Adjust the brightness, one touch set 10 levels of brightness, pressing for 1-6 sec adjust the brightness up to 256 levels continuously.



For double colors or RGB+CCT(WW/CW), adjust temperature with WW/CW channels. A short press set 11 levels of tunable white, if pressed for 2 seconds sets the maximum or minimum color temperature available in the channel.

For RGB adjust the temperature color doing a mix on R G B channels; can set 11 tunable white levels.

For RGBW adjusts the brightness of the W channel, until 11 levels. A longer tap of 2 seconds brings the brightness of the White channel to 100% or 0%.



RGB mode: with a short touch it sets up to 10 levels of colour rotation speed, keeping the button pressed for 2s goes to the default speed. For static RGB colour, adjust the saturation, i.e., short pressing the button slowly changes the current static RGB colour to white up to 11 levels, instead long pressing for 1-6s adjusts continuously the colours up to 256 levels.

Note:

1. For the single color, the RGB/CCT touch wheel changes only brightness. RGB, MODE, SPEED buttons are invalid.
2. For dual color, tapping the RGB/CCT wheel will only change the color temperature. RGB, MODE, SPEED buttons are invalid.
3. For RGB, when you tap the CCT wheel, adjust the color temperature based on the R/G/B mix channel.
4. For RGBW, when you tap the CCT wheel, adjust the brightness of the W channel.
5. Turn on/off the tone of the button: Press the power button to turn off all lights and wait 5 seconds after closing. Press for 10s power button when all the lights in the area are turned off, the tone turns on or off.
6. The DMX-T4-ZONE device keeps the memory of the last command set.

➤ **DMX MASTER**

Light type	Light channel	Zona1 DMX address	Zona2 DMX address	Zona3 DMX address	Zona4 DMX address
Single color	W W W W W	1-5	6-10	11-15	16-20
Double color	WW CW WW CW 0	1-5	6-10	11-15	16-20
RGB	R G B 0 0	1-5	6-10	11-15	16-20
RGBW	R G B W W	1-5	6-10	11-15	16-20
RGB+CCT	R G B WW CW	1-5	6-10	11-15	16-20

➤ **DYNAMIC MODE LIST**

No.	Name	No.	Name
1	RGB jumps	6	RGB fade in and out
2	RGB smooth	7	Red fade in and out
3	6 color jumps	8	Blue fade in and out
4	6 color smooth	9	Green fade in and out
5	Smooth color temperatures	10	White fade in and out

➤ **MANAGE THE PANEL AS A REMOTE RF****USE THE CONTROLLER MATCH KEY****Match:**

Press the match button, immediately press the zone button of the touch panel.

Delete:

Hold down the match button for 5s to eliminate all matches, lighting lights 5 times means that all paired remote controls have been deleted and is ready to use.

USE POWER RESTART**Match:**

Turn off the receiver power supply, then turn on the power again, immediately press the Zone button 3 times on the touch panel. If the light flashes 3 times means that the match is successful.

Delete:

Turn off the receiver power supply, then turn on the power again, immediately press the Zone button 5 times on the touch panel. If the light flashes 5 times means that all paired remote controls have been eliminated.